

**Infinova**<sup>®</sup>  
The Integrator's Manufacturer



Condensed Catalog  
2010

## The Integrator's Manufacturer

Infinova is an American security products manufacturer focused on quality, reliability and technology. We are known for our depth of experience in:

- Analog and IP technology.
- Solutions where these technologies coexist.
- Managing costs and leveraging the most from your existing security infrastructure.

Successful solutions come about only when you understand how all the pieces fit together. Whether it involves components or code, our engineers and sales professionals work hand-in-hand to bring about successful long-term solutions.

As a manufacturer, we can adapt our technology and customize our products for specialized applications. Our open platform strategy ensures that our products are flexible, scalable and compatible with the leading brands in the industry. As a system solutions manufacturer for security and surveillance, we build reliable products designed to survive harsh industrial and commercial environments.

Through our advanced technology and engineering skills Infinova brings you a solution you can rely on.

## Need more detailed information?

For a Long Form Catalog, more detailed product information, specifications, configuration diagrams and Architects and Engineers bid specifications, please contact Infinova.

### TABLE OF CONTENTS

<b>Megapixel and IP Surveillance System.....</b>	<b>2-4</b>
<b>Analog Surveillance System.....</b>	<b>5</b>
High Speed PTZ Dome Cameras.....	5
PTZ Cameras and Cameras.....	6
Minidome Cameras.....	7
DVR and Lenses.....	8
Video Matrix Switchers.....	9
Keyboards / Controllers.....	9
CCTV Accessories and Software.....	10
Monitors.....	11
<b>Fiber Optic Transmission System.....</b>	<b>11-17</b>

All rights reserved. Product features, appearance, specifications, model numbers and availability are all subject to change without notice.



# *Source manufacturer for y & communications*



## Megapixel and IP Surveillance System

### V1731N-M Series Indoor IP Mini PTZ Dome Cameras



- 1/4" SONY CCD, 10X12 zoom available
- MPEG-4/MJPEG, dual stream encoding
- Supports multiple ways to handle alarms, such as sending an email, FTP upload, audible alarm, SD storage (trigger recording), relay output
- View and control cameras via Web server, Infinova V2216 and leading Network Video Management software packages
- High-precision drive motor for smooth and quick movement
- 360° continuous pan travel, auto flip vertically
- No surveillance blind area
- Dome address setting via software or DIP switch
- Preset speed at 350°/s for real-time, prompt surveillance
- 254 presets, 4 patterns, 4 autopans, 6 tours
- 2 privacy masking modes, 16 video blanking sectors and 24 spherical privacy zones
- Auto flip, autoscan and home position Zoom selected area (supported by management software)
- Surge and lightning protection
- Password protection
- Multiple mounting way for high adaptability

### V1720N-M / V1740N-M Series Indoor and Outdoor IP PTZ Dome Cameras



- Advanced Sony cameras and Hitachi cameras for selection
- >480 lines of resolution for 18X, 22X, 26X cameras
- >530 lines of resolution for 23X, 35X, 36X cameras
- 12X digital zoom available for all versions
- Built-in video over IP server, no additional equipment required
- MPEG-4/MJPEG, dual stream encoding
- Supports multiple ways to handle alarms, such as sending an email, FTP upload, audible alarm, SD storage (trigger recording), relay output
- View and control cameras via Web server, Infinova V2216 and leading Network Video Management software packages
- Up to 128 presets with 16 characters each
- Auto Iris (AI), Auto Focus (AF), Back Light Compensation (BLC)
- Image Stabilization on 35X model
- Wide dynamic range on the 23X, 35X and 36X models
- Proportional high-speed pan/tilt and automatic flip
- Up to 24 advanced spherical privacy zones
- 16 video blanking sectors, 4 programmable patterns
- Automatic home position
- Internal multi-protocol receiver/driver
- Outdoor options include: surge and lightning protection; anti-ice / anti-mist, built-in heater and air circulating system exceeds IP66 and NEMA 4X Specifications, vandal-resistant

### V6201-M Series Megapixel IP Cameras



- 1/2.5" progressive scan CMOS
- MPEG-4/MJPEG, dual stream encoding
- Up to 1.3MP (1280x960) image resolution
- 25 fps @1280x720, 20 fps @1280x960
- Privacy mask, motion detection
- Bi-directional audio, G.711
- 2 alarm inputs, 1 relay output
- Supports multiple ways to handle alarms, such as sending an email, FTP upload, audible alarm, SD storage (trigger recording), Relay output
- View and control cameras via Web server, Infinova V2216 and leading Network Video Management software packages
- PoE/12VDC/24VAC

### V6101-M / V6102-M Series IP Cameras



- 1/3" SONY EX-view CCD
- MPEG-4/MJPEG, dual stream encoding
- 30/25 fps at full D1 resolution
- Privacy mask, motion detection
- Bi-directional audio, G.711
- 2 alarm inputs, 1 relay output
- Auto switch B/W and Color mode (V6102-M only)
- Supports multiple ways to handle alarms, such as sending an email, FTP upload, audible alarm, SD storage (trigger recording), Relay output
- View and control cameras via Web server, Infinova V2216 and leading Network Video Management software packages
- PoE/12VDC/24VAC

**V6821-M Series Megapixel IP Minidome Cameras**

- 1/2.5" progressive scan CMOS
- MPEG-4/MJPEG, dual stream encoding
- Up to 1.3MP (1280×960) image resolution
- 25 fps @1280×720, 20 fps @1280×960
- Privacy mask, motion detection
- Bi-directional audio (optional)
- Alarm function (optional)
- Supports multiple ways to handle alarms, such as sending an email, FTP upload, audible alarm, SD storage (trigger recording), Relay output
- View and control cameras via Web server, Infinova V2216 and leading Network Video Management software packages
- Surface, Pendant or Recessed Mount, vandal resistant, 3-Axis adjustment
- PoE/12VDC/24VAC



Recessed

**V6621-M / V6622-M Series Indoor IP Minidome Cameras**

- 1/3" SONY EX-view CCD
- MPEG-4/MJPEG, dual stream encoding
- 30/25 fps at full D1 resolution
- Privacy mask, motion detection
- Bi-directional audio (optional)
- Alarm function (optional)
- Auto switch B/W and Color mode (V6622-M only)
- Supports multiple ways to handle alarms, such as sending an email, FTP upload, audible alarm, SD storage (trigger recording), Relay output
- View and control cameras via Web server, Infinova V2216 and leading Network Video Management software packages
- Surface, Pendant or Recessed Mount, vandal resistant, 3-Axis adjustment
- PoE/12VDC/24VAC



Pendant

**V6641-M / V6642-M Series Outdoor IP Minidome Cameras**

- 1/3" SONY EX-view CCD
- MPEG-4/MJPEG, dual stream encoding
- 30/25 fps at full D1 resolution
- Privacy mask, motion detection
- Bi-directional audio (optional)
- Alarm function (optional)
- Auto switch B/W and Color mode (V6642-M only)
- Supports multiple ways to handle alarms, such as sending an email, FTP upload, audible alarm, SD storage (trigger recording), Relay output
- View and control cameras via Web server, Infinova V2216 and leading Network Video Management software packages
- Surface or Pendant Mount, vandal resistant, 3-Axis adjustment
- IP66 with Heater and Blower
- 12VDC/24VAC



Recessed

**V6623-M / V6643-M Series WDR IP Minidome Cameras**

- 1/3" PIXIM DPS (Digital Pixel System)
- Up to 120dB wide dynamic range
- MPEG-4/MJPEG, dual stream encoding
- 30/25 fps at full D1 resolution
- Privacy mask, motion detection
- Bi-directional audio (optional)
- Alarm function (optional)
- Supports multiple ways to handle alarms, such as sending an email, FTP upload, audible alarm, SD storage (trigger recording), Relay output
- View and control cameras via Web server, Infinova V2216 and leading Network Video Management software packages
- Recessed (V6623-M only), Surface or Pendant Mount, vandal resistant, 3-Axis adjustment
- IP66 with Heater and Blower (V6643-M only)
- Power supply: PoE/12VDC/24VAC (V6623-M), 12VDC/24VAC (V6643-M)



Surface

### V1492N-M Series High-Speed IP PTZ Camera System



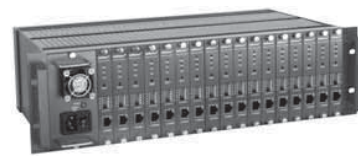
- SONY cameras, 18X, 26X and 36X optical zoom available
- Integrated with INFINOVA, PELCO-P/D protocol (Autosensing)
- 254 selectable addresses setting via software or DIP switch
- Up to 254 Presets with labels, 6 programmable Tours, 4 programmable Patterns, 4 Auto-Pan, 1 Auto-Scan
- Automatic return to home position
- MPEG-4/MJPEG, dual stream encoding
- 30/25 fps at full D1 resolution
- Privacy mask, motion detection
- Bi-directional audio (optional)
- Alarm function (optional)
- Supports multiple ways to handle alarms, such as sending an email, FTP upload, audible alarm, Relay output
- View and control cameras via Web server, Infinova V2216 and leading Network Video management software packages
- 360° continuous pan rotation, Unobstructed +40° ~ -90° Vertical Tilt Range
- High strength aluminum alloy, high temperature resistant, anti-corrosion housing
- Window wiper, built-in heater and window defroster/defogger included
- Operational in 90 mph wind conditions, withstanding wind velocity of up to 130 mph
- IP66 environmental protection

### V2508 Series Network Video Decoder



V2508-M

- MPEG-4 video decoding
- D1/2CIF/CIF video output
- Each video decoder card provides 2 analog video outputs
- PAL/NTSC format self-adaptive
- Support multiple protocols such as TCP/IP, HTTP, SNMP, UDP, NTP
- Web Server for access and system parameter setup
- System software update via network
- Multiple users access
- Multi-level user password, to prevent unauthorized parameter change
- System reset



V2508-R

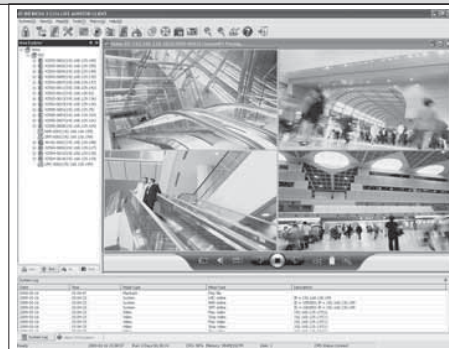
### V2509-M Series IP Video Encoder



- Embedded Linux operation system
- MPEG-4 / M-JPEG dual encoding
- Bi-directional audio communication, G.711
- Privacy mask
- Motion detection
- Two alarm inputs and one relay output are provided
- Support multiple alarm response ways: Mail, FTP upload, Audio, SD storage, Relay output
- Network protocols of TCP/IP, ICMP, PPPoE, DHCP, SMTP, RTSP and SNMP supported
- Web Server for video viewing and parameter configuration
- System update via network
- Multi-level user password protection for network security
- Compatible with Infinova V2216 Network Video Management software
- Easy integration with other video surveillance software
- PoE/12VDC/24VAC


### V2216 Series Network Video Management Software


- Three editions are provided. Each supports up to 32/128/9999 video inputs
- Inherits advantages from IP video matrix switchers, such as tour, salvo, event timers, switch controllers
- Integration with all Infinova's and some other manufacturers' analog video system
- Advanced TV wall technology. Single client PC supports output of 4 videos to TV wall
- Support Electronic map, GIS/BMP/JPG and so on
- Audio broadcasting. To broadcast audio to multiple video inputs
- Intelligent video analysis
- Rich auxiliary functions : Snapshot, motion detection alarm and so on
- Multi languages support
- PTZ control. Intelligent dome camera operation support
- Major and minor code streams auto switch. System will use minor code stream automatically to display multiple videos, so as to reduce client PC resource consumption, to improve efficiency
- Search devices among different gateways; all online devices can be scanned according to type
- Front-end video distribution, solving the problem caused by simultaneous access of many users, saving front-end devices bandwidth
- Up to 64 priority levels
- Video viewing in 1/4/6/8/9/16/25/36/64 frames. Video playback with audio in 1/4/6/8/9/16 frames
- Intercom function
- Supports Windows operation systems such as Windows 2000, Windows XP, Windows 2003, Windows Vista
- Auto lock
- USB-Key for system encryption, safe and convenient





## High Speed PTZ Dome Cameras

Both indoor and outdoor versions of our SuperDome Series offer a combination of sophisticated functions and extraordinary economy. Multiple protocols are built-in to facilitate use of the cameras as additions to or replacements in existing systems. No other PTZ domes give you so much for so little.


V1731A Series Indoor Mini PTZ Dome Cameras	
<ul style="list-style-type: none"> <li>• Internal SONY CCD, 10X12 zoom available</li> <li>• High-precision drive motor for smooth and quick movement</li> <li>• 360° continuous pan travel, auto flip vertically</li> <li>• No surveillance blind area</li> <li>• Dome address setting via software or DIP switch</li> <li>• Preset speed at 350°/s for real-time, prompt surveillance</li> <li>• 254 presets, 4 patterns, 4 autopans, 6 tours</li> <li>• Auto flip, autoscan and home position</li> <li>• Motion detection function associated with relay alarm</li> <li>• 2 alarm inputs, 1 relay output</li> <li>• Power failure protection for preset parameters</li> <li>• Zoom selected area (supported by management software)</li> <li>• Update online</li> <li>• Surge and lightning protection</li> <li>• 2 privacy masking modes, 16 video blanking sectors and 24 spherical privacy zones</li> <li>• Motor speed adjustable</li> <li>• Compass coordinate</li> <li>• IP66 protection rating (nor for recessed mount domes)</li> <li>• Bracket, recessed and surface mount</li> </ul>	

V1720A / V1740A Series Indoor and Outdoor PTZ Dome Cameras	
 <ul style="list-style-type: none"> <li>• Sony or Hitachi cameras</li> <li>• 18X12, 22X12, 23X12, 26X12, 35X12 and 36X12 zoom available</li> <li>• Auto iris, auto focus, backlight compensation</li> <li>• Optional day/night camera</li> <li>• Wide dynamic range on 23X, 35X and 36X models</li> <li>• Image stabilization on the 35X model</li> <li>• Proportional high-speed pan, tilt and automatic flip</li> <li>• Advanced 1/4" DSP CCD camera</li> <li>• Up to 128 presets</li> <li>• Preset position</li> </ul>	<ul style="list-style-type: none"> <li>• 4 programmable patterns</li> <li>• Privacy masks</li> <li>• Password protection</li> <li>• 16 programmable areas</li> <li>• Internal multi-protocol receiver/driver</li> <li>• PTZ Data: RS-422, RS-485</li> <li>• 4 alarm inputs, 1 relay output</li> <li>• Multiple languages supported</li> <li>• Outdoor options include: surge and lightning protection; anti-ice, anti-mist, heater, air circulating; exceed IP66 and NEMA 4X specs; vandal-resistant</li> </ul>

V1700M / V1700S Series Indoor and Outdoor Single and Multi-mode Fiber Optic Dome Cameras	
 <ul style="list-style-type: none"> <li>• Sony cameras</li> <li>• Integrated single-and multi-mode fiber optical dome</li> <li>• 18X12, 26X12, 36X12 zoom available</li> <li>• Auto iris, auto focus, backlight compensation</li> <li>• Optional day/night camera</li> <li>• Wide dynamic range on 36X model</li> <li>• Proportional high-speed pan, tilt and automatic flip</li> <li>• Advanced 1/4" DSP CCD camera</li> <li>• Up to 128 presets</li> <li>• Preset position</li> </ul>	<ul style="list-style-type: none"> <li>• 4 programmable patterns</li> <li>• Privacy masks</li> <li>• Password protection</li> <li>• 16 programmable areas</li> <li>• Internal multi-protocol receiver/driver</li> <li>• PTZ Data: RS-422, RS-485</li> <li>• 4 alarm inputs, 1 relay output</li> <li>• Outdoor options include: surge and lightning protection; anti-ice, anti-mist, heater, air circulating; exceed IP66 and NEMA 4X specs; vandal-resistant</li> </ul>

V1750A Series Pressurized PTZ Dome Cameras	
 <ul style="list-style-type: none"> <li>• Sony cameras</li> <li>• Stainless steel (316L) construction</li> <li>• Sensors relay status information for internal temperature and pressure, real-time display</li> <li>• Temperature conversion between Celsius and Fahrenheit</li> <li>• Rich alarm functions, low-pressure, relay output, and call presets and pattern</li> <li>• Advanced 1/4" DSP CCD camera, three kinds of multiple zooms by 18x12, 26x12, 36X12</li> <li>• Up to 128 presets, 16 programmable areas</li> <li>• Auto iris, auto focus, backlight compensation</li> <li>• Wide dynamic range on 36X model</li> <li>• Proportional high-speed pan and tilt and automatic flip</li> <li>• Home position function to guarantee dome executes preset command automatically when there is no operation</li> <li>• Built-in multi-protocol converter, supporting many kinds of main stream protocols with high compatibility</li> <li>• Password protection to avoid illegal user to modify menu parameters</li> <li>• IP67 protection, with reliable dust-proof and water resistant capability</li> </ul>	

## PTZ Cameras

<b>V1492 Series High-Speed PTZ Camera System</b>	
<ul style="list-style-type: none"> <li>• SONY cameras, 18X, 26X and 36X optical zoom available</li> <li>• Integral Multi-Protocol Receiver/Driver</li> <li>• Compatible with 3rd party controllers</li> <li>• Integrated with INFINOVA, PELCO-P/D protocol (Autosensing) and Up-the-coax protocol</li> <li>• 254 selectable addresses setting via software or DIP switch</li> <li>• Up to 254 presets with labels, 6 programmable Tours, 4 programmable Patterns, 4 Auto-Pan, 1 Auto-Scan</li> <li>• Automatic return to home position</li> <li>• Alarm function (optional)</li> <li>• Direction display function</li> <li>• 360° continuous pan rotation, Unobstructed +40° ~ -90° Vertical Tilt Range</li> <li>• High strength aluminum alloy, high temperature resistant, anti-corrosion housing</li> <li>• Window wiper, built-in heater and window defroster/defogger included</li> <li>• Operational in 90 mph wind conditions; withstanding wind velocity of up to 130 mph</li> <li>• IP66 environmental protection</li> </ul>	

## Cameras

<b>V5111-A2 Series Fixed Color Cameras</b>	
<ul style="list-style-type: none"> <li>• 1/3" SONY HAD CCD</li> <li>• Resolution: 480 TVL</li> <li>• Sensitivity: 0.5 lux (Color), 0.3 lux (B/W)</li> <li>• Easy day/night switch function</li> <li>• High sensitivity, anti-blooming and S/N ratio</li> </ul>	<ul style="list-style-type: none"> <li>• AES, AGC, MWB/ATW, BLC, F.L.</li> <li>• Back Focus adjustment</li> <li>• Supports both DC-Drive and VIDEO-Drive lens</li> <li>• LEVEL adjustment</li> <li>• 12VDC/24VAC</li> </ul>
<b>V5112-A2 Series Fixed Day/Night Cameras</b>	
<ul style="list-style-type: none"> <li>• 1/3" SONY HAD CCD</li> <li>• Resolution: 480 TVL</li> <li>• Sensitivity: 0.5 lux (Color), 0.02 lux (B/W)</li> <li>• Auto switch B/W and Color mode</li> <li>• High sensitivity, anti-blooming and S/N ratio</li> </ul>	<ul style="list-style-type: none"> <li>• AES, AGC, MWB/ATW, BLC, F.L.</li> <li>• Back Focus adjustment</li> <li>• Supports both DC-Drive and VIDEO-Drive lens</li> <li>• LEVEL adjustment</li> <li>• 12VDC/24VAC</li> </ul>
<b>V5101-A5 Series High Resolution Color Cameras</b>	
<ul style="list-style-type: none"> <li>• 1/3" SONY EX-view CCD</li> <li>• Resolution: 560 TVL</li> <li>• Sensitivity: 0.5 lux (Color), 0.24 lux (B/W)</li> <li>• Easy day/night switch function</li> <li>• High sensitivity, anti-blooming and S/N ratio</li> </ul>	<ul style="list-style-type: none"> <li>• AES, AGC, MWB/ATW, BLC, F.L.</li> <li>• Back Focus adjustment</li> <li>• Supports both DC-Drive and VIDEO-Drive lens</li> <li>• LEVEL adjustment</li> <li>• 12VDC/24VAC</li> </ul>
<b>V5102-A5 Series High Resolution Day/Night Cameras</b>	
<ul style="list-style-type: none"> <li>• 1/3" SONY EX-view CCD</li> <li>• Resolution: 560 TVL</li> <li>• Sensitivity: 0.5 lux (Color), 0.01 lux (B/W)</li> <li>• Auto switch B/W and Color mode</li> <li>• High sensitivity, anti-blooming and S/N ratio</li> </ul>	<ul style="list-style-type: none"> <li>• AES, AGC, MWB/ATW, BLC, F.L.</li> <li>• Back Focus adjustment</li> <li>• Supports both DC-Drive and VIDEO-Drive lens</li> <li>• LEVEL adjustment</li> <li>• 12VDC/24VAC</li> </ul>
<b>V5103-A3 Series WDR Color Cameras</b>	
<ul style="list-style-type: none"> <li>• 1/3" PIXIM DPS (Digital Pixel System)</li> <li>• Wide dynamic range: up to 120dB</li> <li>• Resolution: 520 TVL</li> <li>• PAL/NTSC format selectable</li> <li>• Superior color rendering, Anti-blooming</li> <li>• Programmable OSD menu</li> </ul>	<ul style="list-style-type: none"> <li>• Privacy mask, motion detection</li> <li>• Digital slow shutter</li> <li>• 4X digital zoom</li> <li>• Image mirror</li> <li>• 12VDC/24VAC</li> </ul>





## Minidome Cameras

<p><b>V5411-A2 / A5 Series Indoor Color Fixed Minidome Cameras</b></p> <ul style="list-style-type: none"> <li>• 1/3" SONY CCD</li> <li>• Resolution: 480 TVL or 560 TVL</li> <li>• Sensitivity: 0.3 lux (480 TVL) or 0.5 lux (560 TVL)</li> <li>• Auto Iris Vari-focal lens: 2.5~6 mm; Fixed-focal Lens: 3.6 mm</li> <li>• AES, AGC, ATW, F.L., BLC</li> <li>• Surface Mount, 2-Axis adjustment</li> <li>• 12VDC/24VAC</li> </ul>	
<p><b>V5412-A5 Series Indoor Day/Night Fixed Minidome Cameras</b></p> <ul style="list-style-type: none"> <li>• 1/3" SONY CCD</li> <li>• Resolution: 560 TVL</li> <li>• Sensitivity: 0.5 lux (Color), 0.01 lux (B/W)</li> <li>• Auto switch B/W and Color mode</li> <li>• Auto Iris Vari-focal lens: 2.5~6 mm</li> <li>• AES, AGC, MWB/ATW, BLC, F.L.</li> <li>• LEVEL adjustment</li> <li>• Surface Mount, 2-Axis adjustment</li> <li>• 12VDC/24VAC</li> </ul>	
<p><b>V5413-A3 Series Indoor WDR Color Fixed Minidome Cameras</b></p> <ul style="list-style-type: none"> <li>• 1/3" PIXIM DPS (Digital Pixel System)</li> <li>• Wide dynamic range: up to 120dB</li> <li>• Resolution: 520 TVL</li> <li>• Auto Iris Vari-focal lens: 2.5~6 mm</li> <li>• PAL/NTSC format selectable</li> <li>• Superior color rendering, Anti-blooming</li> <li>• Programmable OSD menu</li> <li>• Privacy mask, motion detection</li> <li>• Digital slow shutter</li> <li>• 4X digital zoom</li> <li>• Image mirror</li> <li>• Surface Mount, 2-Axis adjustment</li> <li>• 12VDC/24VAC</li> </ul>	
<p><b>V5621-A5 / V5622-A5 Series Indoor Fixed Minidome Cameras</b></p> <ul style="list-style-type: none"> <li>• 1/3" SONY EX-view CCD</li> <li>• Resolution: 560 TVL</li> <li>• Sensitivity: V5621-A5: 0.5 lux; V5622-A5: 0.5 lux (Color), 0.01 lux (B/W)</li> <li>• Auto switch B/W and Color mode (V5622-A5 only)</li> <li>• Auto Iris Vari-focal lens: 3.3~12 mm</li> <li>• AES, AGC, MWB/ATW, BLC, F.L.</li> <li>• LEVEL adjustment</li> <li>• Surface, Pendant or Recessed Mount, vandal resistant, 3-Axis adjustment</li> <li>• 12VDC/24VAC</li> </ul>	 <p>Pendant</p>  <p>Recessed</p>  <p>Surface</p>
<p><b>V5641-A5 / V5642-A5 Series Outdoor Fixed Minidome Cameras</b></p> <ul style="list-style-type: none"> <li>• 1/3" SONY EX-view CCD</li> <li>• Resolution: 560 TVL</li> <li>• Sensitivity: V5641-A5: 0.5 lux; V5642-A5: 0.5 lux (Color), 0.01 lux (B/W)</li> <li>• Auto switch B/W and Color mode (V5642-A5 only)</li> <li>• Auto Iris Vari-focal lens: 3.3~12 mm</li> <li>• AES, AGC, MWB/ATW, BLC, F.L.</li> <li>• LEVEL adjustment</li> <li>• Surface or Pendant Mount, vandal resistant, 3-Axis adjustment</li> <li>• IP66 with Heater and Blower</li> <li>• 12VDC/24VAC</li> </ul>	
<p><b>V5623-A3 / V5643-A3 Series WDR Fixed Minidome Cameras</b></p> <ul style="list-style-type: none"> <li>• 1/3" PIXIM DPS (Digital Pixel System)</li> <li>• Wide dynamic range: up to 120dB</li> <li>• Resolution: 520 TVL</li> <li>• Auto Iris Vari-focal lens: 3.3~12 mm</li> <li>• PAL/NTSC format selectable</li> <li>• Superior color rendering, Anti-blooming</li> <li>• Programmable OSD menu</li> <li>• Privacy mask, motion detection</li> <li>• Digital slow shutter</li> <li>• 4X digital zoom</li> <li>• Image mirror</li> <li>• Recessed (V5623-A3 only), Surface or Pendant Mount, vandal resistant, 3-Axis adjustment</li> <li>• IP66 with Heater and Blower (V5643-A3 only)</li> <li>• 12VDC/24VAC</li> </ul>	

## High performance DVR

Infinova DVRs utilize the latest advancements in information technology, such as high-quality video/audio compression, large-scale Hard Drive capabilities and TCP/IP networking to produce the industry's most reliable and most flexible Network Digital Video Recorder. Infinova Network Digital Video Recorders are designed for the world of industrial security, both large and small-scale projects. Configurations from 4 to 16 channels of video are available to meet the requirements of any system.

Infinova DVRs utilize an embedded processor and embedded VXWorks operating system for the highest possible reliability. Infinova DVRs function as both a Digital Video Recorder (DVR) and Digital Video Server (DVS). All Infinova DVRs feature real-time hardware compression of video and audio signals, local hard drive recording, real-time video/voice preview, video/audio switching functions, local recorded video file playback, real-time network transmission, remote file playback, scheduled download to a video server, and large-scale video storage unit for archiving.

Infinova DVRs support Internet Explorer and bi-directional audio capabilities. Infinova Network Digital Video Recorders can be remotely accessed through either a Local Area Network (LAN) or the Internet. After logging in, a user will be able to view and control either live or recorded images through TCP/IP protocols, with remote capability limited by user access levels. Infinova DVRs' reliability and wide range of functions make it an ideal video storage solution for large and small-scale CCTV projects.



DVR/DVS Client-end Software Interface

### V3009 Series DVS/DVR

- 1 BNC primary output, 1 BNC matrix output and 1 VGA output, up to 16 video looping outputs
- 4 audio inputs and 1 audio output (only for 4/16-CH models)
- 16 alarm inputs and 4 alarm outputs
- Video stream and composite stream (for 4/16 models with 1-4 channel)
- 4 SATA interfaces, support 4 SATA hard disks
- TCP, UTP, RTP, DHCP, and other network protocols
- Pan/tilt or dome control by local site or network
- Upgrades firmware via network and USB port
- Client software allows user to check device operating status, configure system parameter, connected PTZ control, search recorded files remotely, playback, download, etc. remotely, playback, download, etc



### V3011 Series DVS/DVR

- Built-in DVD writer ( optional )
- Auxiliary Monitor Output (Composite Video)
- 2 audio outputs (main and auxiliary respectively)
- H.264 video and G.722 audio encoding technology
- Up to 16 alarm inputs and 4 alarm outputs
- Supports bi-directional audio between the monitoring center and the local site
- Up to 8 internal hard disks
- Alarm pre-record and alarm delay functionality
- Full featured client software and web browser interface included



### V3013 Series DVS/DVR

- 30 Frames Per Second all Channels (480 frame on 16 channel)
- H.264 Video Compression
- Up to 8 terabytes of internal storage
- Up to 4 CIF Resolution
- V3013W internal DVD writer, V3013A No DVD writer
- 8 and 16 video/audio inputs
- Privacy masks and multi-area motion detection
- Manual record, timing record, motion detect record, alarm input record, alarm pre-record and alarm relay function
- Bi-directional audio between the monitoring center and the local site
- Pan/tilt and lens control using front panel controls or GUI software
- Downloadable upgrades for products updating through USB
- Video authentication watermark technology



### V3034 Series Mini DVS/DVR

- Embedded Linux operation system
- DaVinci DSP hardware encoding
- 4 Ch video with up to 4CIF encoding format
- Real-time frame rate reaching 25/30fps (PAL/NTSC)
- Dual code stream, and subcode stream supports CIF/QCIF encoding format
- Quadruplex functions-manual records, timing records, motion detect records, alarm input records
- Embedded TCP, UTP, RTP, DHCP and other network protocols supporting multi-play function
- PPPoE dial in function
- Remote parameter setting and PTZ control function
- Network bi-directional intercommunication
- Remote DVR software upgrade
- Multi-level users management
- IE browse and control



## Lenses



V1112 Series



V1122 Series



V1132 Series



V1182 Series



V1162 Series

### V1112 Series 1/3" IR Fixed-Focal

- 4 mm or 8 mm
- DC auto iris
- Suited for IR and Day/Night
- Dynamic auto aperture range from F/1.2 to F/360
- Locking built into rings
- Built-in slip mount mechanism
- Light weight and compact

### V1162 Series 1/3" Motorized Zoom

- 6-60 mm
- DC auto iris
- Dynamic auto aperture range from F/1.4 to F/360
- Built-in slip mount mechanism and detachable connection design for easy installation

### V1122 Series 1/3" Vari-Focal

- 3-8 mm, 2.8-12 mm or 5-50 mm
- DC auto iris
- Aspherical for high quality image
- Dynamic auto aperture range from F/1.0 to F/360 or F/1.4 to F/360
- Locking built into rings
- Built-in slip mount mechanism
- Light weight and compact

### V1182 Series Megapixel Vari-Focal 1/2" Lenses

- 3 Mega pixels
- Available in DC auto iris
- Wide aperture rate of F1.4, optimizing the performance at low lighting intensity
- Broad range of f3.8~13mm, supporting various applications

### V1132 Series 1/3" IR Vari-Focal

- 3.0-8.5 mm, 2.8-12 mm or 7.5-50 mm
- DC auto iris
- Suited for IR and Day/Night
- Dynamic auto aperture range from F/1.0 to F/360, F/1.2 to F/360, or F.1.3 to F/360
- Locking for focus, iris and zoom
- Built-in slip mount mechanism

## Video Matrix Switchers

### V2040 Series

- Up to 1024 video inputs by 128 video outputs
- TCP/IP networkable up to 64 nodes; external CPU for added networking features
- Fully controllable Video over IP (optional)
- Compatible with smaller TCP/IP networkable Infinova switchers: V2010N, V2015N, and V2020N
- Scalable high density architecture for easy expansion
- Windows based multimedia management software
- Built-in systems diagnostics and dedicated systems status report
- Control of fixed or variable speed pan/tilt and dome cameras
- Available Internal video loss detection
- 10 flexible RS-232 ports (expandable to 40)
- On-screen display
- Independent monitor tour
- 64 tours, 35 event timers and 64 salvos
- 5 alarm display modes and 3 alarm clearance modes
- Automatic alarm call up to 1024 alarm inputs
- Internal system partition including input-to-output display; keyboard-to-input display; keyboard-to-input control



### V2020 Series

- Up to 240 video inputs by 16 video outputs
- TCP/IP networkable up to 64 nodes
- Fully controllable Video over IP (optional)
- Compatible with other size TCP/IP networkable Infinova switchers: V2040N, V2015N, and V2011N
- Scalable high density architecture for easy expansion
- Windows based multimedia management software
- Built-in systems diagnostics and dedicated systems status report
- Control of fixed or variable speed pan/tilt and dome cameras
- Available Internal video loss detection
- RS-232 communication
- 8 flexible RS-232 ports (expandable to 32)
- On-screen display
- Independent monitor tour
- 64 tours, 35 event timers and 64 salvos
- 5 alarm display modes and 3 alarm clearance modes
- Automatic alarm call up to 1,024 alarm inputs
- Internal system partition including input-to-output display; keyboard-to-input display; keyboard-to-input control



### V2015 Series

- Up to 80 video inputs by 16 video outputs
- TCP/IP networkable up to 64 nodes
- Fully controllable Video over IP (optional)
- Compatible with other size TCP/IP networkable Infinova switchers: V2040N, V2020N, and V2011N
- Modular microprocessor based, full cross-point video matrix
- Control of fixed or variable speed pan/tilt and dome cameras operating on Manchester PTZ protocol
- 5 flexible RS-232 ports (expandable to 20)
- 16 programmable alarm inputs (expandable to 240), 2 alarm outputs
- 64 tours, 35 event timers and 64 salvos
- 4 sets of Manchester control code output
- 5 alarm display modes and 3 alarm clearance modes
- Run and alarm status indicators on front panel
- 19-inch



### V2011 Series

- Up to 32 video inputs by 8 video outputs
- TCP/IP networkable up to 64 nodes
- Fully controllable Video over IP (optional)
- Compatible with other size TCP/IP networkable Infinova switchers: V2040N, V2020N, and V2015N
- Modular microprocessor based, full cross-point video matrix
- Control of fixed or variable speed pan/tilt and dome cameras operating on Manchester PTZ protocol
- 3 flexible RS-232 ports (expandable to 12)
- 16 programmable alarm inputs (expandable to 240), 2 alarm outputs
- 64 tours, 35 event timers and 64 salvos
- 4 sets of Manchester control code output
- 5 alarm display modes and 3 alarm clearance modes
- Run and alarm status indicators on front panel
- 19-inch



## Keyboards / Controllers

### V2117 Multi-Purpose Keyboard

- Control up to 16 dome cameras, DVRs, matrix switchers
- RS-232 or Ethernet communication
- Total system programming and control
- 3D variable speed joystick
- 40-character LCD Display
- User priority/password log-in
- RS-485 and Manchester data ports



• Durable design

### V2111 DVR & Dome Controller Keyboard

- Controls DVRs and PTZ Dome Cameras
- Manchester and RS-485 interfaces
- LCD display and 3-D joystick



### V2109 Dome Controller Keyboard

- Economical direct controller for up to 32 PTZ dome cameras
- LCD display and 3-D joystick
- Manchester and RS-485 outputs



### V2110 Operator Keyboard

- Control presets, patterns, tours and salvos
- Variable speed joystick
- 4-digit LED Display
- Alarm acknowledgement
- Durable design



## CCTV Accessories

### V2401 Series Video Distribution Amplifier

- 4 or 16 video outputs from one input
- LED status indicators
- B&W and color compatible
- Wide frequency response
- No adjustments required
- Desktop is standard, rackmount is optional



### V2403-16 Video Looping Unit

- 1 set of 16 video inputs
- 2 sets of 16 video outputs
- LED status indicators
- Wide frequency response
- Compact design and easy installation
- B&W and color compatible
- No adjustments required
- Desktop is standard, rackmount is optional



### V2405-4 Port Expander

- Expands a single RS-232 data port into 4
- Selectable baud rate
- LED status indicators
- Desktop is standard, rackmount is optional



### V2410 RS485 Code Distributor

- Distribute one RS485 code input into 16 RS485 code outputs for multiple use of control codes
- Code and power indicators
- Compatible with Infinova V2011 and V2015 Matrix Switching Systems



### V2411 Series Code Generator/Distributor

- Interfaces with V2040, V2020 and V2015 matrix switchers via high-speed data line (HSDL)
- 1 HSDL input, 16 RS-485 outputs
- LED status indicators for power and data



### V2414 Up-The-Coax Code Converter

- Provides one Manchester code input, one DATA LINE IN/OUT and one RS-485 code input
- 16 control signal outputs to control 16 up-the-coax protocol Infinova PTZ Domes
- Multiple protocols and baud rate optional for RS-485 input
- Communicates with Infinova series matrix switchers via Manchester code, HSDL or RS485
- Desk top or rack mount available



### V2413 Code/Data Merger

- One Manchester/Biphase code input, one high speed data line (HSDL) in/out, and two RS-485 data inputs
- 16 RS-485 code outputs to control 16 cameras
- Multi-protocol third party inputs with priority level settings and multiple protocols input on RS-485
- Communicates with Infinova matrix video switchers via HSDL, Manchester, or RS-485
- Communicates with Infinova keyboards via Manchester Code, or third-party equipment via RS-485
- Plug-in terminal connector available



### V2421 Switch Follower

- Relays to follow switch of cameras to monitors
- DIP switches to select camera and monitor groups
- 32 programmable Form A relays
- For automation of accessories such as intercom and lighting
- Multiple units can be cascaded to provide additional relay outputs
- Compatible with all Infinova matrix switchers



### V2431 Alarm Interface Unit

- Up to 64 addressable alarm inputs
- Up to 16 units can be cascaded together on a single RS-232 data stream to provide 1,024 total addressable alarms
- 1 relay output available to activate recording, alarm, lights or other devices
- Compatible with all Infinova matrix switchers



### V2422 Alarm Follower

- Relays to follow switch of alarms on monitors
- DIP switches to select armed monitor groups
- 32 programmable Form A relays
- For automation of alarm related devices such as video recorders
- Multiple units can be cascaded to provide additional relay outputs
- Compatible with all Infinova matrix switchers



### V2423 Auxiliary Follower

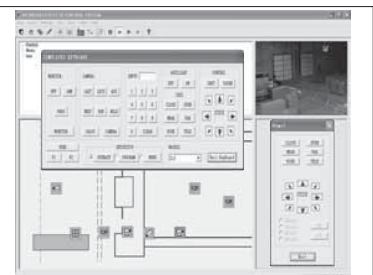
- Relays to follow auxiliary activation
- DIP switches to select camera and auxiliary groups
- 32 programmable Form A relays
- For automation of auxiliary accessories
- Multiple units can be cascaded to provide additional relay outputs
- Compatible with all Infinova matrix switchers



## Software

### V2210 CCTV Management Software

- V2210 provides control of matrix switchers via LAN
- Windows based
- Interfaces with all Infinova matrix switchers
- On-screen simulated keyboard
- Full control using menus and icons
- Alarm interface capability
- Electronic maps and event log
- Live video window
- IP or analog/capture card video input



## Monitors

V1321T Series Color CRT Monitors	
<ul style="list-style-type: none"> <li>• 14"</li> <li>• 430 TVL</li> <li>• PAL/NTSC auto switch</li> </ul>	<ul style="list-style-type: none"> <li>• 1 S-video input/output, 1 BNC input/output, 1 RCA input/output</li> <li>• On-screen display (OSD) menu for Brightness, Color, Contrast, Tint</li> <li>• Volume Control, Channel A/B switch and Power switch</li> </ul>
V1322T Series Color CRT Monitors	
<ul style="list-style-type: none"> <li>• 21"</li> <li>• 500 TVL</li> <li>• PAL/NTSC auto switch</li> </ul>	<ul style="list-style-type: none"> <li>• 1 S-video input/output, 1 BNC input/output, 1 RCA input/output</li> <li>• On-screen display (OSD) menu for Brightness, Color, Contrast, Tint</li> <li>• Volume Control and Power switch</li> </ul>
V1324T Series Color CRT Monitors	
<ul style="list-style-type: none"> <li>• 17"</li> <li>• 800 TVL</li> <li>• PAL/NTSC auto switch</li> </ul>	<ul style="list-style-type: none"> <li>• 1 S-video input/output, 2 BNC input/output, 3 RCA input/output</li> <li>• On-screen display (OSD) menu for Brightness, Sharpness, Color Saturation, Contrast, Tint and Color Mode</li> </ul>
V1362 Series LCD Monitors	
<ul style="list-style-type: none"> <li>• 15"</li> <li>• 500 TVL</li> <li>• 1024 X 768 (15" model) / 1280 X 1024 (17" and 19" models)</li> </ul>	<ul style="list-style-type: none"> <li>• PAL/NTSC system auto switch</li> <li>• Video, S-Video, VGA/SVGA/XGA</li> <li>• Video BNC in/out (1.0Vp-p, 75Ohm), Y/C in/out, Audio in/out, VGA15-pin Mini D-Sub in</li> <li>• Response Time: 12ms(15" model), 5ms (17" and 19" models)</li> </ul>

## Proof positive that Infinova fiber optics are the industry's best

Infinova's comprehensive line of fiber optic communications products provides key advantages over all other brands. These features can result in significant savings on equipment and installation, with superb system performance.

Infinova can meet any requirement you have with the industry's most complete line of products for video, audio and data transmission, including singlemode and multimode fiber. Our modules are plug-and-play and require no adjustments.

Shown on right, superior channel density and number of slots per 19" subrack are the keys to Infinova's industry leading racking density, while surface mount technology helps eliminate RFI and EMI.

### The industry's highest optical budget

With the highest optical budget in the industry, you can go longer distances and make more connections without additional modules, resulting not only in equipment and labor savings, but more reliable installations since fewer components means fewer points of possible failure. No other brand can match Infinova's superior optical budget.

### The industry's widest optical dynamic range

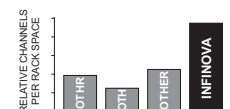
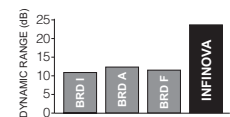
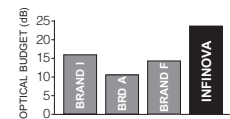
The industry's widest optical dynamic range gives you greater latitude in design and installation without encountering problems from over-driving or under-driving receivers. That means equipment savings, possible labor savings and greater peace of mind. No other brand can match Infinova's superior optical dynamic range.

### The industry's highest racking density

The industry's highest racking density lets you fit more equipment in less space and save on racking equipment. Compared to competitors, Infinova modules often require an astonishing one-half to one-third as much rack space!

### The industry's only reconfigurability

Infinova fiber optic modules can be reconfigured between stand-alone units and rack mount, giving you important flexibility as your systems grow. With other brands, going from a small or pilot project to a larger system means starting over and losing your initial investment.





Part Number	Description	Wavelength	Butiget	Max. Distance
-------------	-------------	------------	---------	---------------

4V>



N3544/  
N3744  
SERIES

Multimode

N3544TA-M	FO MM TX,4V In,Module,12VDC/24VAC	1310 nm	7dB	2.2 km/1.4 mi.
N3544TA-R	FO MM TX,4V In,Card,1-Slot	1310 nm	7dB	2.2 km/1.4 mi.
N3544RA-M	FO MM RX,4V Out,Module,12VDC/24VAC	1310 nm	7dB	2.2 km/1.4 mi.
N3544RA-R	FO MM RX,4V Out,Card,1-Slot	1310 nm	7dB	2.2 km/1.4 mi.

Singlemode

N3744TA-M	FO SM TX,4V In,Module,12VDC/24VAC	1310 nm	17dB	25 km/15.5 mi.
N3744TA-R	FO SM TX,4V In,Card,1-Slot	1310 nm	17dB	25 km/15.5 mi.
N3744RA-M	FO SM RX,4V Out,Module,12VDC/24VAC	1310 nm	17dB	25 km/15.5 mi.
N3744RA-R	FO MM RX,4V Out,Card,1-Slot	1310 nm	17dB	25 km/15.5 mi.

6V>



N3546/  
N3746  
SERIES

Multimode

N3546TA-M	FO MM TX, 6V In, Module, 12VDC/24VAC	1310 nm	7dB	2.2 km/1.4 mi.
N3546TA-R	FO MM TX, 6V In, Card, 2-Slot	1310 nm	7dB	2.2 km/1.4 mi.
N3546RA-M	FO MM RX, 6V Out, Module, 12VDC/24VAC	1310 nm	7dB	2.2 km/1.4 mi.
N3546RA-R	FO MM RX, 6V Out, Card, 2-Slot	1310 nm	7dB	2.2 km/1.4 mi.

Singlemode

N3746TA-M	FO SM TX,6V In,Module,12VDC/24VAC	1310 nm	17dB	25 km/15.5 mi.
N3746TA-R	FO SM TX,6V In,Card,2-Slot	1310 nm	17dB	25 km/15.5 mi.
N3746RA-M	FO SM RX,6V Out,Module,12VDC/24VAC	1310 nm	17dB	25 km/15.5 mi.
N3746RA-R	FO SM RX,6V Out,Card,2-Slot	1310 nm	17dB	25 km/15.5 mi.

8V>



N3548/  
N3748  
SERIES

Multimode

N3548TA-M	FO MM TX, 8V In, Module, 12VDC/24VAC	1310 nm	7dB	2.2 km/1.4 mi.
N3548TA-R	FO MM TX, 8V In, Card, 2-Slot	1310 nm	7dB	2.2 km/1.4 mi.
N3548RA-M	FO MM RX, 8V Out, Module, 12VDC/24VAC	1310 nm	7dB	2.2 km/1.4 mi.
N3548RA-R	FO MM RX, 8V Out, Card, 2-Slot	1310 nm	7dB	2.2 km/1.4 mi.

Singlemode

N3748TA-M	FO SM TX,8V In,Module,12VDC/24VAC	1310 nm	17dB	25 km/15.5 mi.
N3748TA-R	FO SM TX,8V In,Card,2-Slot	1310 nm	17dB	25 km/15.5 mi.
N3748RA-M	FO SM RX,8V Out,Module,12VDC/24VAC	1310 nm	17dB	25 km/15.5 mi.
N3748RA-R	FO SM RX,8V Out,Card,2-Slot	1310 nm	17dB	25 km/15.5 mi.

2V> + D < > + B < >



N3551/  
N3751  
SERIES

Multimode

N3551TA-1D1B-M	FO MM TRX,2V In,1D IO+1 RS-232 IO, Module,12VDC/24VAC	1310/1310 nm	7dB	2.2 km/1.4 mi.
N3551TA-1D1B-R	FO MM TRX,2V In,1D IO+1 RS-232 IO, Card,2-Slot	1310/1310 nm	7dB	2.2 km/1.4 mi.
N3551RA-1D1B-M	FO MM TRX,2V Out,1D IO+1 RS-232 IO, Module,12VDC/24VAC	1310/1310 nm	7dB	2.2 km/1.4 mi.
N3551RA-1D1B-R	FO MM TRX,2V Out,1D IO+1 RS-232 IO, Card,2-Slot	1310/1310 nm	7dB	2.2 km/1.4 mi.

Singlemode

N3751TA-1D1B-M	FO SM TRX,2V In,1D IO+1 RS-232 IO, Module,12VDC/24VAC	1310/1550 nm	17dB	25 km/15.5 mi.
N3751TA-1D1B-R	FO SM TRX,2V In,1D IO+1 RS-232 IO, Card,2-Slot	1310/1550 nm	17dB	25 km/15.5 mi.
N3751RA-1D1B-M	FO SM TRX,2V Out,1D IO+1 RS-232 IO, Module,12VDC/24VAC	1310/1550 nm	17dB	25 km/15.5 mi.
N3751RA-1D1B-R	FO SM TRX,2V Out,1D IO+1 RS-232 IO, Card,2-Slot	1310/1550 nm	17dB	25 km/15.5 mi.

2V > + 2A < > + 2D < >



N3552/  
N3752  
SERIES

Multimode

N3552TA-2A2D-M	FO MM TRX, 2V In, 2D IO, 2A IO, Module, 12VDC/24VAC	1310/1310 nm	7dB	2.2 km/1.4 mi.
N3552TA-2A2D-R	FO MM TRX, 2V In, 2D IO, 2A IO, Card, 2-Slot	1310/1310 nm	7dB	2.2 km/1.4 mi.
N3552RA-2A2D-M	FO MM TRX, 2V Out, 2D IO, 2A IO, Module, 12VDC/24VAC	1310/1310 nm	7dB	2.2 km/1.4 mi.
N3552RA-2A2D-R	FO MM TRX, 2V Out, 2D IO, 2A IO, Card, 2-Slot	1310/1310 nm	7dB	2.2 km/1.4 mi.

Singlemode

N3752TA-2A2D-M	FO SM TRX, 2V In, 2D IO, 2A IO, Module, 12VDC/24VAC	1310/1550 nm	17dB	25 km/15.5 mi.
N3752TA-2A2D-R	FO SM TRX, 2V In, 2D IO, 2A IO, Card, 2-Slot	1310/1550 nm	17dB	25 km/15.5 mi.
N3752RA-2A2D-M	FO SM TRX, 2V Out, 2D IO, 2A IO, Module, 12VDC/24VAC	1310/1550 nm	17dB	25 km/15.5 mi.
N3752RA-2A2D-R	FO SM TRX, 2V Out, 2D IO, 2A IO, Card, 2-Slot	1310/1550 nm	17dB	25 km/15.5 mi.

2V > + 4D < >



N3553/  
N3753  
SERIES

Multimode

N3553TA-2D2B-M	FO MM TRX,2V In,2D IO+2 RS-232, Module,12VDC/24VAC	1310/1310 nm	7dB	2.2 km/1.4 mi.
N3553TA-2D2B-R	FO MM TRX,2V In,2D IO+2 RS-232, Card,2-Slot	1310/1310 nm	7dB	2.2 km/1.4 mi.
N3553RA-2D2B-M	FO MM TRX,2V Out,2D IO+2 RS-232, Module,12VDC/24VAC	1310/1310 nm	7dB	2.2 km/1.4 mi.
N3553RA-2D2B-R	FO MM TRX,2V Out,2D IO+2 RS-232, Card,2-Slot	1310/1310 nm	7dB	2.2 km/1.4 mi.
N3553TA-4D-M	FO MM TRX,2V In,4D IO,Module,12VDC/24VAC	1310/1310 nm	7dB	2.2 km/1.4 mi.
N3553TA-4D-R	FO MM TRX,2V In,4D IO,Card,2-Slot	1310/1310 nm	7dB	2.2 km/1.4 mi.
N3553RA-4D-M	FO MM TRX,2V Out,4D IO,Module,12VDC/24VAC	1310/1310 nm	7dB	2.2 km/1.4 mi.
N3553RA-4D-R	FO MM TRX,2V Out,4D IO,Card,2-Slot	1310/1310 nm	7dB	2.2 km/1.4 mi.
N3553TA-4B-M	FO MM TRX,2V In,4 RS-232 IO,Module,12VDC/24VAC	1310/1310 nm	7dB	2.2 km/1.4 mi.
N3553TA-4B-R	FO MM TRX,2V In,4 RS-232 IO,Card,2-Slot	1310/1310 nm	7dB	2.2 km/1.4 mi.
N3553RA-4B-M	FO MM TRX,2V Out,4 RS-232 IO,Module,12VDC/24VAC	1310/1310 nm	7dB	2.2 km/1.4 mi.
N3553RA-4B-R	FO MM TRX,2V Out,4 RS-232 IO,Card,2-Slot	1310/1310 nm	7dB	2.2 km/1.4 mi.

Part Number	Description	Wavelength	Budget	Max. Distance
<b>Singlemode</b>				
N3753TA-2D2B-M	FO SM TRX,2V In,2D IO+2 RS-232, Module,12VDC/24VAC	1310/1550 nm	17dB	25 km/15.5 mi.
N3753TA-2D2B-R	FO SM TRX,2V In,2D IO+2 RS-232, Card,2-Slot	1310/1550 nm	17dB	25 km/15.5 mi.
N3753RA-2D2B-M	FO SM TRX,2V Out,2D IO+2 RS-232, Module,12VDC/24VAC	1310/1550 nm	17dB	25 km/15.5 mi.
N3753RA-2D2B-R	FO SM TRX,2V Out,2D IO+2 RS-232, Card,2-Slot	1310/1550 nm	17dB	25 km/15.5 mi.
N3753TA-4D-M	FO SM TRX,2V In,4D IO,Module,12VDC/24VAC	1310/1550 nm	17dB	25 km/15.5 mi.
N3753TA-4D-R	FO SM TRX,2V In,4D IO,Card,2-Slot	1310/1550 nm	17dB	25 km/15.5 mi.
N3753RA-4D-M	FO SM TRX,2V Out,4D IO,Module,12VDC/24VAC	1310/1550 nm	17dB	25 km/15.5 mi.
N3753RA-4D-R	FO SM TRX,2V Out,4D IO,Card,2-Slot	1310/1550 nm	17dB	25 km/15.5 mi.
N3753TA-4B-M	FO SM TRX,2V In,4 RS-232 IO,Module,12VDC/24VAC	1310/1550 nm	17dB	25 km/15.5 mi.
N3753TA-4B-R	FO SM TRX,2V In,4 RS-232 IO,Card,2-Slot	1310/1550 nm	17dB	25 km/15.5 mi.
N3753RA-4B-M	FO SM TRX,2V Out,4 RS-232 IO,Module,12VDC/24VAC	1310/1550 nm	17dB	25 km/15.5 mi.
N3753RA-4B-R	FO SM TRX,2V Out,4 RS-232 IO,Card,2-Slot	1310/1550 nm	17dB	25 km/15.5 mi.

**4V > + D < > + B < >**

<b>Multimode</b>				
N3554TA-1D1B-M	FO MM TRX, 4V In, 1D IO +1 RS-232 IO, Module, 12VDC/24VAC	1310/1310 nm	7dB	2.2 km/1.4 mi.
N3554TA-1D1B-R	FO MM TRX, 4V In, 1D IO +1 RS-232 IO, Card, 2-Slot	1310/1310 nm	7dB	2.2 km/1.4 mi.
N3554RA-1D1B-M	FO MM TRX, 4V Out, 1D IO +1 RS-232 IO, Module, 12VDC/24VAC	1310/1310 nm	7dB	2.2 km/1.4 mi.
N3554RA-1D1B-R	FO MM TRX, 4V Out, 1D IO +1 RS-232 IO, Card, 2-Slot	1310/1310 nm	7dB	2.2 km/1.4 mi.



N3554/  
N3754  
SERIES

<b>Singlemode</b>				
N3754TA-1D1B-M	FO SM TRX,4V In,1D IO+1 RS-232 IO,Module,12VDC/24VAC	1310/1550 nm	17dB	25 km/15.5 mi.
N3754TA-1D1B-R	FO SM TRX,4V In,1D IO+1 RS-232 IO,Card,2-Slot	1310/1550 nm	17dB	25 km/15.5 mi.
N3754RA-1D1B-M	FO SM TRX,4V Out,1D IO+1 RS-232 IO,Module,12VDC/24VAC	1310/1550 nm	17dB	25 km/15.5 mi.
N3754RA-1D1B-R	FO SM TRX,4V Out,1D IO+1 RS-232 IO,Card,2-Slot	1310/1550 nm	17dB	25 km/15.5 mi.

**4V > + 2A < > + 2D < >**

<b>Multimode</b>				
N3555TA-2A2D-M	FO MM TRX, 4V In, 2D IO, 2A IO, Module, 12VDC/24VAC	1310/1310 nm	7dB	2.2 km/1.4 mi.
N3555TA-2A2D-R	FO MM TRX, 4V In, 2D IO, 2A IO, Card, 2-Slot	1310/1310 nm	7dB	2.2 km/1.4 mi.
N3555RA-2A2D-M	FO MM TRX, 4V Out, 2D IO, 2A IO, Module, 12VDC/24VAC	1310/1310 nm	7dB	2.2 km/1.4 mi.
N3555RA-2A2D-R	FO MM TRX, 4V Out, 2D IO, 2A IO, Card, 2-Slot	1310/1310 nm	7dB	2.2 km/1.4 mi.



N3555/  
N3755  
SERIES

<b>Singlemode</b>				
N3755TA-2A2D-M	FO SM TRX, 4V In, 2D IO, 2A IO, Module, 12VDC/24VAC	1310/1550 nm	17dB	25 km/15.5 mi.
N3755TA-2A2D-R	FO SM TRX, 4V In, 2D IO, 2A IO, Card, 2-Slot	1310/1550 nm	17dB	25 km/15.5 mi.
N3755RA-2A2D-M	FO SM TRX, 4V Out, 2D IO, 2A IO, Module, 12VDC/24VAC	1310/1550 nm	17dB	25 km/15.5 mi.
N3755RA-2A2D-R	FO SM TRX, 4V Out, 2D IO, 2A IO, Card, 2-Slot	1310/1550 nm	17dB	25 km/15.5 mi.

**4V > + 4D < >**

<b>Multimode</b>				
N3556TA-2D2B-M	FO MM TRX, 4V In, 2D IO +2 RS-232 IO, Module, 12VDC/24VAC	1310/1310 nm	7dB	2.2 km/1.4 mi.
N3556TA-2D2B-R	FO MM TRX, 4V In, 2D IO +2 RS-232 IO, Card, 2-Slot	1310/1310 nm	7dB	2.2 km/1.4 mi.
N3556RA-2D2B-M	FO MM TRX, 4V Out, 2D IO +2 RS-232 IO, Module, 12VDC/24VAC	1310/1310 nm	7dB	2.2 km/1.4 mi.
N3556RA-2D2B-R	FO MM TRX, 4V Out, 2D IO +2 RS-232 IO, Card, 2-Slot	1310/1310 nm	7dB	2.2 km/1.4 mi.
N3556TA-4D-M	FO MM TRX, 4V In, 4D IO, Module, 12VDC/24VAC	1310/1310 nm	7dB	2.2 km/1.4 mi.
N3556TA-4D-R	FO MM TRX, 4V In, 4D IO, Card, 2-Slot	1310/1310 nm	7dB	2.2 km/1.4 mi.
N3556RA-4D-M	FO MM TRX, 4V Out, 4D IO, Module, 12VDC/24VAC	1310/1310 nm	7dB	2.2 km/1.4 mi.
N3556RA-4D-R	FO MM TRX, 4V Out, 4D IO, Card, 2-Slot	1310/1310 nm	7dB	2.2 km/1.4 mi.
N3556TA-4B-M	FO MM TRX, 4V In, 4 RS-232 IO, Module, 12VDC/24VAC	1310/1310 nm	7dB	2.2 km/1.4 mi.
N3556TA-4B-R	FO MM TRX, 4V In, 4 RS-232 IO, Card, 2-Slot	1310/1310 nm	7dB	2.2 km/1.4 mi.
N3556RA-4B-M	FO MM TRX, 4V Out, 4 RS-232 IO, Module, 12VDC/24VAC	1310/1310 nm	7dB	2.2 km/1.4 mi.
N3556RA-4B-R	FO MM TRX, 4V Out, 4 RS-232 IO, Card, 2-Slot	1310/1310 nm	7dB	2.2 km/1.4 mi.



N3556/  
N3756  
SERIES

<b>Singlemode</b>				
N3756TA-2D2B-M	FO SM TRX,4V In,2D IO+2 RS-232,Module,12VDC/24VAC	1310/1550 nm	17dB	25 km/15.5 mi.
N3756TA-2D2B-R	FO SM TRX,4V In,2D IO+2 RS-232,Card,2-Slot	1310/1550 nm	17dB	25 km/15.5 mi.
N3756RA-2D2B-M	FO SM TRX,4V Out,2D IO+2 RS-232,Module,12VDC/24VAC	1310/1550 nm	17dB	25 km/15.5 mi.
N3756RA-2D2B-R	FO SM TRX,4V Out,2D IO+2 RS-232,Card,2-Slot	1310/1550 nm	17dB	25 km/15.5 mi.
N3756TA-4D-M	FO SM TRX,4V In,4D IO,Module,12VDC/24VAC	1310/1550 nm	17dB	25 km/15.5 mi.
N3756TA-4D-R	FO SM TRX,4V In,4D IO,Card,2-Slot	1310/1550 nm	17dB	25 km/15.5 mi.
N3756RA-4D-M	FO SM TRX,4V Out,4D IO,Module,12VDC/24VAC	1310/1550 nm	17dB	25 km/15.5 mi.
N3756RA-4D-R	FO SM TRX,4V Out,4D IO,Card,2-Slot	1310/1550 nm	17dB	25 km/15.5 mi.
N3756TA-4B-M	FO SM TRX,4V In,4 RS-232 IO,Module,12VDC/24VAC	1310/1550 nm	17dB	25 km/15.5 mi.
N3756TA-4B-R	FO SM TRX,4V In,4 RS-232 IO,Card,2-Slot	1310/1550 nm	17dB	25 km/15.5 mi.
N3756RA-4B-M	FO SM TRX,4V Out,4 RS-232 IO,Module,12VDC/24VAC	1310/1550 nm	17dB	25 km/15.5 mi.
N3756RA-4B-R	FO SM TRX,4V Out,4 RS-232 IO,Card,2-Slot	1310/1550 nm	17dB	25 km/15.5 mi.

**8V > + D < > + B < >**

<b>Multimode</b>				
N3557TA-1D1B-M	FO MM TRX, 8V In, 1D IO +1 RS-232 IO, Module, 12VDC/24VAC	1310/1310 nm	7dB	2.2 km/1.4 mi.
N3557TA-1D1B-R	FO MM TRX, 8V In, 1D IO +1 RS-232 IO, Card, 3-Slot	1310/1310 nm	7dB	2.2 km/1.4 mi.
N3557RA-1D1B-M	FO MM TRX, 8V Out, 1D IO +1 RS-232 IO, Module, 12VDC/24VAC	1310/1310 nm	7dB	2.2 km/1.4 mi.
N3557RA-1D1B-R	FO MM TRX, 8V Out, 1D IO +1 RS-232 IO, Card, 3-Slot	1310/1310 nm	7dB	2.2 km/1.4 mi.



N3557/  
N3757  
SERIES

<b>Singlemode</b>				
N3757TA-1D1B-M	FO SM TRX,8V In,1D IO+1 RS-232 IO,Module,12VDC/24VAC	1310/1550 nm	17dB	25 km/15.5 mi.
N3757TA-1D1B-R	FO SM TRX,8V In,1D IO+1 RS-232 IO,Card,3-Slot	1310/1550 nm	17dB	25 km/15.5 mi.
N3757RA-1D1B-M	FO SM TRX,8V Out,1D IO+1 RS-232 IO,Module,12VDC/24VAC	1310/1550 nm	17dB	25 km/15.5 mi.
N3757RA-1D1B-R	FO SM TRX,8V Out,1D IO+1 RS-232 IO,Card,3-Slot	1310/1550 nm	17dB	25 km/15.5 mi.



Part Number	Description	Wavelength	Budget	Max. Distance
-------------	-------------	------------	--------	---------------

**8V > + 2A <> + 2D <>**

**Multimode**

N3558TA-2A2D-M	FO MM TRX, 8V In, 2D IO, 2A IO, Module, 12VDC/24VAC	1310/1310 nm	7dB	2.2 km/1.4 mi.
N3558TA-2A2D-R	FO MM TRX, 8V In, 2D IO, 2A IO, Card, 3-Slot	1310/1310 nm	7dB	2.2 km/1.4 mi.
N3558RA-2A2D-M	FO MM TRX, 8V Out, 2D IO, 2A IO, Module, 12VDC/24VAC	1310/1310 nm	7dB	2.2 km/1.4 mi.
N3558RA-2A2D-R	FO MM TRX, 8V Out, 2D IO, 2A IO, Card, 3-Slot	1310/1310 nm	7dB	2.2 km/1.4 mi.

**Singlemode**

N3758TA-2A2D-M	FO SM TRX, 8V In, 2D IO, 2A IO, Module, 12VDC/24VAC	1310/1550 nm	17dB	25 km/15.5 mi.
N3758TA-2A2D-R	FO SM TRX, 8V In, 2D IO, 2A IO, Card, 3-Slot	1310/1550 nm	17dB	25 km/15.5 mi.
N3758RA-2A2D-M	FO SM TRX, 8V Out, 2D IO, 2A IO, Module, 12VDC/24VAC	1310/1550 nm	17dB	25 km/15.5 mi.
N3758RA-2A2D-R	FO SM TRX, 8V Out, 2D IO, 2A IO, Card, 3-Slot	1310/1550 nm	17dB	25 km/15.5 mi.



N3558/  
N3758  
SERIES

**8V> + 4D<>**

**Multimode**

N3559TA-2D2B-M	FO MM TRX, 8V In, 2D IO +2 RS-232 IO, Module, 12VDC/24VAC	1310/1310 nm	7dB	2.2 km/1.4 mi.
N3559TA-2D2B-R	FO MM TRX, 8V In, 2D IO +2 RS-232 IO, Card, 3-Slot	1310/1310 nm	7dB	2.2 km/1.4 mi.
N3559RA-2D2B-M	FO MM TRX, 8V Out, 2D IO +2RS-232 IO, Module, 12VDC/24VAC	1310/1310 nm	7dB	2.2 km/1.4 mi.
N3559RA-2D2B-R	FO MM TRX, 8V Out, 2D IO +2 RS-232 IO, Card, 3-Slot	1310/1310 nm	7dB	2.2 km/1.4 mi.
N3559TA-4D-M	FO MM TRX, 8V In, 4D IO, Module, 12VDC/24VAC	1310/1310 nm	7dB	2.2 km/1.4 mi.
N3559TA-4D-R	FO MM TRX, 8V In, 4D IO, Card, 3-Slot	1310/1310 nm	7dB	2.2 km/1.4 mi.
N3559RA-4D-M	FO MM TRX, 8V Out, 4D IO, Module, 12VDC/24VAC	1310/1310 nm	7dB	2.2 km/1.4 mi.
N3559RA-4D-R	FO MM TRX, 8V Out, 4D IO, Card, 3-Slot	1310/1310 nm	7dB	2.2 km/1.4 mi.
N3559TA-4B-M	FO MM TRX, 8V In, 4 RS-232 IO, Module, 12VDC/24VAC	1310/1310 nm	7dB	2.2 km/1.4 mi.
N3559TA-4B-R	FO MM TRX, 8V In, 4 RS-232 IO, Card, 3-Slot	1310/1310 nm	7dB	2.2 km/1.4 mi.
N3559RA-4B-M	FO MM TRX, 8V Out, 4 RS-232 IO, Module, 12VDC/24VAC	1310/1310 nm	7dB	2.2 km/1.4 mi.
N3559RA-4B-R	FO MM TRX, 8V Out, 4 RS-232 IO, Card, 3-Slot	1310/1310 nm	7dB	2.2 km/1.4 mi.

**Singlemode**

N3759TA-2D2B-M	FO SM TRX, 8V In, 2D IO +2 RS-232 IO, Module, 12VDC/24VAC	1310/1550 nm	17dB	25 km/15.5 mi.
N3759TA-2D2B-R	FO SM TRX, 8V In, 2D IO +2 RS-232 IO, Card, 3-Slot	1310/1550 nm	17dB	25 km/15.5 mi.
N3759RA-2D2B-M	FO SM TRX, 8V Out, 2D IO +2 RS-232 IO, Module, 12VDC/24VAC	1310/1550 nm	17dB	25 km/15.5 mi.
N3759RA-2D2B-R	FO SM TRX, 8V Out, 2D IO +2 RS-232 IO, Card, 3-Slot	1310/1550 nm	17dB	25 km/15.5 mi.
N3759TA-4D-M	FO SM TRX, 8V In, 4D IO, Module, 12VDC/24VAC	1310/1550 nm	17dB	25 km/15.5 mi.
N3759TA-4D-R	FO SM TRX, 8V In, 4D IO, Card, 3-Slot	1310/1550 nm	17dB	25 km/15.5 mi.
N3759RA-4D-M	FO SM TRX, 8V Out, 4D IO, Module, 12VDC/24VAC	1310/1550 nm	17dB	25 km/15.5 mi.
N3759RA-4D-R	FO SM TRX, 8V Out, 4D IO, Card, 3-Slot	1310/1550 nm	17dB	25 km/15.5 mi.
N3759TA-4B-M	FO SM TRX, 8V In, 4 RS-232 IO, Module, 12VDC/24VAC	1310/1550 nm	17dB	25 km/15.5 mi.
N3759TA-4B-R	FO SM TRX, 8V In, 4 RS-232 IO, Card, 3-Slot	1310/1550 nm	17dB	25 km/15.5 mi.
N3759RA-4B-M	FO SM TRX, 8V Out, 4 RS-232 IO, Module, 12VDC/24VAC	1310/1550 nm	17dB	25 km/15.5 mi.
N3759RA-4B-R	FO SM TRX, 8V Out, 4 RS-232 IO, Card, 3-Slot	1310/1550 nm	17dB	25 km/15.5 mi.



N3559/  
N3759  
SERIES

**Multiplexing Module**

**Singlemode**

N3790TA-16-M	FO SM TX, 16V In, Module, 24VAC	1470 ~1610 nm	20dB	30 km/18.6 mi.
N3790TA-16-R	FO SM TX, 16V In, Card, 4-Slot	1470 ~1610 nm	20dB	30 km/18.6 mi.
N3790RA-16-M	FO SM RX, 16V Out, Module, 24VAC	1470 ~1610 nm	20dB	30 km/18.6 mi.
N3790RA-16-R	FO SM RX, 16V Out, Card, 4-Slot	1470 ~1610 nm	20dB	30 km/18.6 mi.
N3790TA-16-D-R	FO SM TRX, 16V In, 1D IO, Card, 6-Slot	1470 ~1610 nm	20dB	30 km/18.6 mi.
N3790RA-16-D-R	FO SM TRX, 16V Out, 1D IO, Card, 6-Slot	1470 ~1610 nm	20dB	30 km/18.6 mi.
N3790TA-16-AD-R	FO SM TRX, 16V In, 1D IO, 1A IO, 1CC IO, Card, 6-Slot	1470 ~1610 nm	20dB	30 km/18.6 mi.
N3790RA-16-AD-R	FO SM TRX, 16V Out, 1D IO, 1A IO, 1CC IO, Card, 6-Slot	1470 ~1610 nm	20dB	30 km/18.6 mi.
N3790TA-16-BD-R	FO SM TRX, 16V In, 2D IO, Card, 6-Slot	1470 ~1610 nm	20dB	30 km/18.6 mi.
N3790RA-16-BD-R	FO SM TRX, 16V Out, 2D IO, Card, 6-Slot	1470 ~1610 nm	20dB	30 km/18.6 mi.
N3790TA-16-4D-R	FO SM TRX, 16V In, 4D IO, Card, 6-Slot	1470 ~1610 nm	20dB	30 km/18.6 mi.
N3790RA-16-4D-R	FO SM TRX, 16V Out, 4D IO, Card, 6-Slot	1470 ~1610 nm	20dB	30 km/18.6 mi.
N3790TA-16-4B-R	FO SM TRX, 16V In, 4 RS-232 IO, Card, 6-Slot	1470 ~1610 nm	20dB	30 km/18.6 mi.
N3790RA-16-4B-R	FO SM TRX, 16V Out, 4 RS-232 IO, Card, 6-Slot	1470 ~1610 nm	20dB	30 km/18.6 mi.
N3790TA-24-R	FO SM TR, 24V In, Card, 7-Slot	1470 ~1610 nm	20dB	30 km/18.6 mi.
N3790RA-24-R	FO SM RX, 24V Out, Card, 7-Slot	1470 ~1610 nm	20dB	30 km/18.6 mi.
N3790TA-24-AD-R	FO SM TRX, 24V In, 1D IO, 1A IO, 1CC IO, Card, 8-Slot	1470 ~1610 nm	20dB	30 km/18.6 mi.
N3790RA-24-AD-R	FO SM TRX, 24V Out, 1D IO, 1A IO, 1CC IO, Card, 8-Slot	1470 ~1610 nm	20dB	30 km/18.6 mi.
N3790TA-24-BD-R	FO SM TRX, 24V In, 2D IO, Card, 8-Slot	1470 ~1610 nm	20dB	30 km/18.6 mi.
N3790RA-24-BD-R	FO SM TRX, 24V Out, 2D IO, Card, 8-Slot	1470 ~1610 nm	20dB	30 km/18.6 mi.
N3790TA-24-4D-R	FO SM TRX, 24V In, 4D IO, Card, 8-Slot	1470 ~1610 nm	20dB	30 km/18.6 mi.
N3790RA-24-4D-R	FO SM TRX, 24V Out, 4D IO, Card, 8-Slot	1470 ~1610 nm	20dB	30 km/18.6 mi.
N3790TA-24-4B-R	FO SM TRX, 24V In, 4 RS-232 IO, Card, 8-Slot	1470 ~1610 nm	20dB	30 km/18.6 mi.
N3790RA-24-4B-R	FO SM TRX, 24V Out, 4 RS-232 IO, Card, 8-Slot	1470 ~1610 nm	20dB	30 km/18.6 mi.
N3790TA-32-R	FO SM TR, 32V In, Card, 9-Slot	1470 ~1610 nm	20dB	30 km/18.6 mi.
N3790RA-32-R	FO SM RX, 32V Out, Card, 9-Slot	1470 ~1610 nm	20dB	30 km/18.6 mi.
N3790TA-32-D-R	FO SM TRX, 32V In, 1D IO, Card, 10-Slot	1470 ~1610 nm	20dB	30 km/18.6 mi.
N3790RA-32-D-R	FO SM TRX, 32V Out, 1D IO, Card, 10-Slot	1470 ~1610 nm	20dB	30 km/18.6 mi.
N3790TA-32-AD-R	FO SM TRX, 32V In, 1D IO, 1A IO, 1CC IO, Card, 10-Slot	1470 ~1610 nm	20dB	30 km/18.6 mi.
N3790RA-32-AD-R	FO SM TRX, 32V Out, 1D IO, 1A IO, 1CC IO, Card, 10-Slot	1470 ~1610 nm	20dB	30 km/18.6 mi.
N3790TA-32-BD-R	FO SM TRX, 32V In, 2D IO, Card, 10-Slot	1470 ~1610 nm	20dB	30 km/18.6 mi.
N3790RA-32-BD-R	FO SM TRX, 32V Out, 2D IO, Card, 10-Slot	1470 ~1610 nm	20dB	30 km/18.6 mi.
N3790TA-32-4D-R	FO SM TRX, 32V In, 4D IO, Card, 10-Slot	1470 ~1610 nm	20dB	30 km/18.6 mi.
N3790RA-32-4D-R	FO SM TRX, 32V Out, 4D IO, Card, 10-Slot	1470 ~1610 nm	20dB	30 km/18.6 mi.



N3790-16 SERIES



N3790-32 SERIES

Part Number	Description	Wavelength	Budget	Max. Distance
-------------	-------------	------------	--------	---------------

**D < > + B < >**

**Multimode**

N3571XA-1D1B-M	FO MM TRX, 1D IO+1 RS-232, Module, 12VDC/24VAC	1310/1310 nm	12dB	4.4 km/2.7 mi.
N3571XA-1D1B-R	FO MM TRX, 1D IO+1 RS-232, Card, 1-Slot	1310/1310 nm	12dB	4.4 km/2.7 mi.
N3571XB-1D1B-M	FO MM TRX, 1D IO+1 RS-232, Module, 12VDC/24VAC	1310/1310 nm	12dB	4.4 km/2.7 mi.
N3571XB-1D1B-R	FO MM TRX, 1D IO+1 RS-232, Card, 1-Slot	1310/1310 nm	12dB	4.4 km/2.7 mi.

**Singlemode**

N3771XA-1D1B-M	FO SM TRX, 1D IO+1 RS-232, Module, 12VDC/24VAC	1310/1550 nm	20dB	25 km/15.5 mi.
N3771XA-1D1B-R	FO SM TRX, 1D IO+1 RS-232, Card, 1-Slot	1310/1550 nm	20dB	25 km/15.5 mi.
N3771XB-1D1B-M	FO SM TRX, 1D IO+1 RS-232, Module, 12VDC/24VAC	1310/1550 nm	20dB	25 km/15.5 mi.
N3771XB-1D1B-R	FO SM TRX, 1D IO+1 RS-232, Card, 1-Slot	1310/1550 nm	20dB	25 km/15.5 mi.



N3571/  
N3771  
SERIES

**4 D < >**

**Multimode**

N3572XA-2D2B-M	FO MM TRX, 2D IO+2 RS-232 IO, Module, 12VDC/24VAC	1310/1310 nm	12dB	4.4 km/2.7 mi.
N3572XA-2D2B-R	FO MM TRX, 2D IO+2 RS-232 IO, Card, 1-Slot	1310/1310 nm	12dB	4.4 km/2.7 mi.
N3572XA-4D-M	FO MM TRX, 2D IO, Module, 12VDC/24VAC	1310/1310 nm	12dB	4.4 km/2.7 mi.
N3572XA-4D-R	FO MM TRX, 2D IO, Card, 1-Slot	1310/1310 nm	12dB	4.4 km/2.7 mi.
N3572XA-4B-M	FO MM TRX, 4D IO, Module, 12VDC/24VAC	1310/1310 nm	12dB	4.4 km/2.7 mi.
N3572XA-4B-R	FO MM TRX, 4D IO, Card, 1-Slot	1310/1310 nm	12dB	4.4 km/2.7 mi.
N3572XB-2D2B-M	FO MM TRX, 4D IO+2 RS-232 IO, Module, 12VDC/24VAC	1310/1310 nm	12dB	4.4 km/2.7 mi.
N3572XB-2D2B-R	FO MM TRX, 4D IO+2 RS-232 IO, Card, 1-Slot	1310/1310 nm	12dB	4.4 km/2.7 mi.
N3572XB-4D-M	FO MM TRX, 4 RS-232 IO, Module, 12VDC/24VAC	1310/1310 nm	12dB	4.4 km/2.7 mi.
N3572XB-4D-R	FO MM TRX, 4 RS-232 IO, Card, 1-Slot	1310/1310 nm	12dB	4.4 km/2.7 mi.
N3572XB-4B-M	FO MM TRX, 4 RS-232 IO, Module, 12VDC/24VAC	1310/1310 nm	12dB	4.4 km/2.7 mi.
N3572XB-4B-R	FO MM TRX, 4 RS-232 IO, Card, 1-Slot	1310/1310 nm	12dB	4.4 km/2.7 mi.



N3572/  
N3772  
SERIES

**Singlemode**

N3772XA-2D2B-M	FO SM TRX, 2D IO+2 RS-232 IO, Module, 12VDC/24VAC	1310/1550 nm	20dB	25 km/15.5 mi.
N3772XA-2D2B-R	FO SM TRX, 2D IO+2 RS-232 IO, Card, 1-Slot	1310/1550 nm	20dB	25 km/15.5 mi.
N3772XA-4D-M	FO SM TRX, 2D IO, Module, 12VDC/24VAC	1310/1550 nm	20dB	25 km/15.5 mi.
N3772XA-4D-R	FO SM TRX, 2D IO, Card, 1-Slot	1310/1550 nm	20dB	25 km/15.5 mi.
N3772XA-4B-M	FO SM TRX, 4D IO, Module, 12VDC/24VAC	1310/1550 nm	20dB	25 km/15.5 mi.
N3772XA-4B-R	FO SM TRX, 4D IO, Card, 1-Slot	1310/1550 nm	20dB	25 km/15.5 mi.
N3772XB-2D2B-M	FO SM TRX, 4D IO+2 RS-232 IO, Module, 12VDC/24VAC	1310/1550 nm	20dB	25 km/15.5 mi.
N3772XB-2D2B-R	FO SM TRX, 4D IO+2 RS-232 IO, Card, 1-Slot	1310/1550 nm	20dB	25 km/15.5 mi.
N3772XB-4D-M	FO SM TRX, 4 RS-232 IO, Module, 12VDC/24VAC	1310/1550 nm	20dB	25 km/15.5 mi.
N3772XB-4D-R	FO SM TRX, 4 RS-232 IO, Card, 1-Slot	1310/1550 nm	20dB	25 km/15.5 mi.
N3772XB-4B-M	FO SM TRX, 4 RS-232 IO, Module, 12VDC/24VAC	1310/1550 nm	20dB	25 km/15.5 mi.
N3772XB-4B-R	FO SM TRX, 4 RS-232 IO, Card, 1-Slot	1310/1550 nm	20dB	25 km/15.5 mi.



N3574/  
N3774  
SERIES

**A < >**

**Multimode**

N3574XA-1A-M	FO MM TRX, 1A IO, Module, 12VDC/24VAC	1310/1310 nm	12dB	4.4 km/2.7 mi.
N3574XA-1A-R	FO MM TRX, 1A IO, Card, 1-slot	1310/1310 nm	12dB	4.4 km/2.7 mi.
N3574XB-1A-M	FO MM TRX, 1A IO, Module, 12VDC/24VAC	1310/1310 nm	12dB	4.4 km/2.7 mi.
N3574XB-1A-R	FO MM TRX, 1A IO, Card, 1-slot	1310/1310 nm	12dB	4.4 km/2.7 mi.

**Singlemode**

N3774XA-1A-M	FO SM TRX, 1A IO, Module, 12VDC/24VAC	1310/1550 nm	20dB	25 km/15.5 mi.
N3774XA-1A-R	FO SM TRX, 1A IO, Card, 1-slot	1310/1550 nm	20dB	25 km/15.5 mi.
N3774XB-1A-M	FO SM TRX, 1A IO, Module, 12VDC/24VAC	1310/1550 nm	20dB	25 km/15.5 mi.
N3774XB-1A-R	FO SM TRX, 1A IO, Card, 1-slot	1310/1550 nm	20dB	25 km/15.5 mi.

**8 C.C. >**

**Multimode**

N3579TB-8-M	FO MM TX 8 Contact Closure In, Module, 12VDC/24VAC	1310 nm	14dB	4.4 km/2.7 mi.
N3579TB-8-R	FO MM TX 8 Contact Closure In, Card, 1-Slot	1310 nm	14dB	4.4 km/2.7 mi.
N3579RB-8-M	FO MM RX 8 Contact Closure Out, Module, 12VDC/24VAC	1310 nm	14dB	4.4 km/2.7 mi.
N3579RB-8-R	FO MM RX 8 Contact Closure Out, Card, 1-Slot	1310 nm	14dB	4.4 km/2.7 mi.

**Singlemode**

N3779TA-8-M	FO SM TX 8 Contact Closure In, Module, 12VDC/24VAC	1310 nm	20dB	25 km/15.5 mi.
N3779TA-8-R	FO SM TX 8 Contact Closure In, Card, 1-Slot	1310 nm	20dB	25 km/15.5 mi.
N3779RA-8-M	FO SM RX 8 Contact Closure Out, Module, 12VDC/24VAC	1310 nm	20dB	25 km/15.5 mi.
N3779RA-8-R	FO SM RX 8 Contact Closure Out, Card, 1-Slot	1310 nm	20dB	25 km/15.5 mi.



N3579/  
N3779  
SERIES

**...< >D < >D< >...**

**Multimode**

N3583XM-M	FO MM Multidrop Data Master Transceiver; 4 Fibers; Module, 12VDC/24VAC	1310 nm	16dB	4.4 km/2.7 mi.
N3583XM-R	FO MM Multidrop Data Master Transceiver; 4 Fibers; Card, 1-Slot	1310 nm	16dB	4.4 km/2.7 mi.
N3583XS-M	FO MM Multidrop Data Slave Transceiver; 4 Fibers; Module, 12VDC/24VAC	1310 nm	16dB	4.4 km/2.7 mi.
N3583XS-R	FO MM Multidrop Data Slave Transceiver; 4 Fibers; Card, 1-Slot	1310 nm	16dB	4.4 km/2.7 mi.

**Singlemode**

N3783XM-M	FO SM Multidrop Data Master Transceiver; 4 Fibers; Module, 12VDC/24VAC	1310 nm	22dB	25 km/15.5 mi.
N3783XM-R	FO SM Multidrop Data Master Transceiver; 4 Fibers; Card, 1-Slot	1310 nm	22dB	25 km/15.5 mi.
N3783XS-M	FO SM Multidrop Data Slave Transceiver; 4 Fibers; Module, 12VDC/24VAC	1310 nm	22dB	25 km/15.5 mi.
N3783XS-R	FO SM Multidrop Data Slave Transceiver; 4 Fibers; Card, 1-Slot	1310 nm	22dB	25 km/15.5 mi.



N3583/  
N3783  
SERIES

Part Number	Description	Wavelength	Budget	Max. Distance
-------------	-------------	------------	--------	---------------



N3784 SERIES

### Ethernet < >

#### Singlemode

N3784XA-M	FO SM Ethernet 1-Port Transceiver 10/100BASE-T, Module, 12VDC/24VAC	1310/1550 nm	20dB	25 km/15.5 mi.
N3784XA-R	FO SM Ethernet 1-Port Transceiver 10/100BASE-T, Card, 1-Slot	1310/1550 nm	20dB	25 km/15.5 mi.
N3784XB-M	FO SM Ethernet 1-Port Transceiver 10/100BASE-T, Module, 12VDC/24VAC	1310/1550 nm	20dB	25 km/15.5 mi.
N3784XB-R	FO SM Ethernet 1-Port Transceiver 10/100BASE-T, Card, 1-Slot	1310/1550 nm	20dB	25 km/15.5 mi.

N3784XA-4-M	FO SM Ethernet 4-Port Transceiver 10/100BASE-T, Module, 12VDC/24VAC	1310/1550 nm	20dB	25 km/15.5 mi.
N3784XA-4-R	FO SM Ethernet 4-Port Transceiver 10/100BASE-T, Card, 1-Slot	1310/1550 nm	20dB	25 km/15.5 mi.
N3784XB-4-M	FO SM Ethernet 4-Port Transceiver 10/100BASE-T, Module, 12VDC/24VAC	1310/1550 nm	20dB	25 km/15.5 mi.
N3784XB-4-R	FO SM Ethernet 4-Port Transceiver 10/100BASE-T, Card, 1-Slot	1310/1550 nm	20dB	25 km/15.5 mi.



N3586/  
N3786 SERIES

### Telephone < >

#### Multimode

N3586XA-M	FO MM POTS Line Transceiver,Module, 24VAC	1310/1310 nm	12dB	4.4 km/2.7 mi.
N3586XA-R	FO MM POTS Line Transceiver,Card, 1-Slot	1310/1310 nm	12dB	4.4 km/2.7 mi.
N3586XB-M	FO MM POTS Line Transceiver,Module, 24VAC	1310/1310 nm	12dB	4.4 km/2.7 mi.
N3586XB-R	FO MM POTS Line Transceiver,Card,1-Slot	1310/1310 nm	12dB	4.4 km/2.7 mi.

#### Singlemode

N3786XA-M	FO SM POTS Line Transceiver,Module, 24VAC	1310/1550 nm	20dB	25 km/15.5 mi.
N3786XA-R	FO SM POTS Line Transceiver,Card, 1-Slot	1310/1550 nm	20dB	25 km/15.5 mi.
N3786XB-M	FO SM POTS Line Transceiver,Module, 24VAC	1310/1550 nm	20dB	25 km/15.5 mi.
N3786XB-R	FO SM POTS Line Transceiver,Card, 1-Slot	1310/1550 nm	20dB	25 km/15.5 mi.

### Accessories

Wavelength Division Multiplexer Card



18 Slot, 19" 3U Sub-Rack Chassis with Single Power Supply

N3910-18S1	FO Card Chassis,18 Slot,19" x 3U Sub-Rack, w/100W p.s.,120VAC/230VAC			
N3910-18S2	FO Card Chassis,18 Slot,19" x 3U Sub-Rack, w/250W p.s.,120VAC/230VAC			



15 Slot, 19" 3U Sub-Rack Chassis with Dual Redundant Power Supplies

N3910-15R1	FO Card Chassis,15 Slot,19" x 3U Sub-Rack, w/2 100W p.s.,120VAC/230VAC			
N3910-15R2	FO Card Chassis,15 Slot,19" x 3U Sub-Rack, w/2 250W p.s.,120VAC/230VAC			



N3910-6W

4 Slot 7" 3U Sub-Rack, Wall Mount and Desktop Chassis with Power Supply

N3910-6W1	FO Card Chassis,6 Slot,9" x 3U , w/100W p.s.,120VAC/230VAC			
-----------	--	--	--	--

N3910 Series Stand Alone Surface Mount Chassis

Note: One of these four Stand Alone Surface Mount Chassis is included, at no additional charge, when ordering a FO Module (\*-M).

Note: External Power Supply is required. Order PS Separately. N3921 Series for 1 or 2 Slot, N3922 Series for 3 or 4 Slot.



N3910-1S, 2S

N3910-1S	FO Module Card Chassis,1 Slot,12VDC/24VAC			
N3910-2S	FO Module Card Chassis,2 Slot,12VDC/24VAC			
N3910-3S	FO Module Card Chassis,3 Slot,12VDC/24VAC			
N3910-4S	FO Module Card Chassis,4 Slot,12VDC/24VAC			

N3910 Series Accessories

N3910-000	Fan Assembly Unit, 19" x 1U, 120VAC			
N3910X-000	Fan Assembly Unit, 19" x 1U, 230VAC			
NBP1	FO 1 Slot Blank Panel			
NBP2	FO 2 Slot Blank Panel			
NBP4	FO 4 Slot Blank Panel			



N3910-18S

N3910 Series Components

N3910-18S	FO Card Chassis,18 Slot,19" x 3U Sub-Rack, w/o p.s.			
N3910-15R	FO Card Chassis,15 Slot,19" x 3U Sub-Rack, w/o dual p.s.			
N3910-6W	FO Card Chassis,6 Slot,9" x 3U Sub-Rack, w/o p.s.			
N3920-100W	Power Supply,100W,120VAC/230VAC (1X for N3910-18S & N3910-4W, 2X for N3910-15R)			
N3920-250W	Power Supply,250W,120VAC/230VAC (1X for N3910-18S, 2X for N3910-15R)			



N3910-15R

# Global Contact Information



## United States

Infinova  
51 Stouts Lane  
Monmouth Junction, NJ 08852  
United States  
Phone: +1 732 355 9100  
1 888-685-2002 (toll-free)  
Fax: +1 732 355 9101  
E-mail: Sales@infinova.com

## Latin America

Miami: +1-954-990-0787  
Mexico: +52-55-5392-1735  
Venezuela: +58-212-336-0661  
Brazil: +55-11-7479-5640  
E-mail: Sales-LAR@infinova.com

## Europe

Phone: +40 723 536600  
E-mail: Sales-EUR@infinova.com

## Middle East

Phone: +965 247 5678  
E-mail: Sales-ME@infinova.com

## India

Phone: +91 9999020846  
+91 9820179808  
E-mail: Sales-IND@infinova.com

## Hong Kong

Phone: +852 2795 6540  
E-mail: Sales-HK@infinova.com